



4"x4" Square Fiberglass Light Poles

Anchor Base

Standard and Heavy Duty

Product Offering Includes:

- 12'-25' Lengths.
- 3-Layers of protection against UV degradation.
Includes thermally bonded outer coating.
- Anchor Base (Direct Bury also available).
- Anchor Base with 8.5"-9.5" Bolt Circle.
- Base Covers Available.
- Top Cap with drilled mounting holes, 2-3/8" and 3" Tenons coming soon.
- Standard Colors in black, bronze, or gray (other colors available by request).
- Smooth Finish.
- Light Weight, Non-Conductive, and Non-Corrosive.

Product Numbers and EPA Ratings

Standard Duty

| Mounting Height | Catalog Number | Calculated Effective Projected Area (EPA) ^{1,2} | | | | | | | Weight of the Pole (lbs) |
|-----------------|------------------|--|---------|---------|---------|---------|---------|---------|--------------------------|
| | | 90 mph | 100 mph | 110 mph | 120 mph | 130 mph | 140 mph | 150 mph | |
| 12 | A4SS12F00S##GXHH | 17.0 | 13.1 | 10.3 | 8.1 | 6.6 | 6.2 | 4.9 | 37 |
| 15 | A4SS15F00S##GXHH | 12.3 | 9.2 | 6.9 | 5.1 | 3.8 | 3.5 | 2.5 | 44 |
| 18 | A4SS18F00S##GXHH | 8.6 | 6.0 | 4.1 | 2.6 | 1.6 | 1.3 | - | 51 |
| 20 | A4SS20F00S##GXHH | 6.5 | 4.2 | 2.4 | 1.2 | - | - | - | 56 |
| 22 | A4SS22F00S##GXHH | 4.6 | 2.5 | 1.0 | - | - | - | - | 61 |
| 24 | A4SS24F00S##GXHH | 3.0 | 1.1 | - | - | - | - | - | 66 |
| 25 | A4SS25F00S##GXHH | 2.2 | - | - | - | - | - | - | 69 |

Heavy Duty

| Mounting Height | Catalog Number | Calculated Effective Projected Area (EPA) ^{1,2} | | | | | | | Weight of the Pole (lbs) |
|-----------------|------------------|--|---------|---------|---------|---------|---------|---------|--------------------------|
| | | 90 mph | 100 mph | 110 mph | 120 mph | 130 mph | 140 mph | 150 mph | |
| 12 | A4SH12F00S##GXHH | 35.2 | 27.9 | 22.5 | 18.4 | 15.4 | 14.7 | 12.4 | 63 |
| 15 | A4SH15F00S##GXHH | 27.1 | 21.2 | 16.8 | 13.4 | 11.0 | 10.4 | 8.5 | 81 |
| 18 | A4SH18F00S##GXHH | 20.9 | 16.0 | 12.3 | 9.5 | 7.6 | 7.1 | 5.5 | 91 |
| 20 | A4SH20F00S##GXHH | 17.3 | 13.0 | 9.7 | 7.3 | 5.5 | 5.1 | 3.7 | 100 |
| 22 | A4SH22F00S##GXHH | 14.3 | 10.4 | 7.5 | 5.3 | 3.7 | 3.4 | 2.1 | 109 |
| 24 | A4SH24F00S##GXHH | 11.7 | 8.2 | 5.6 | 3.6 | 2.2 | 1.8 | 0.7 | 119 |
| 25 | A4SH25F00S##GXHH | 10.6 | 7.2 | 4.7 | 2.8 | 1.5 | 1.1 | - | 123 |
| 30 | A4SH30F00S##GXHH | 5.0 | 2.0 | - | - | - | - | - | 150 |



Additional pole heights, wind zones, and EPAs available at alliancecompositesinc.com.

Catalog Number

| Base Info | Pole Dim (in) | Pole Geometry | Class | Length (ft) | Unit (ft) | Length (in) | Finish | Options | Color | Drill Code |
|--|---------------------|----------------------|---------------------------------------|-------------|-----------|-------------------|-------------|---|--|--|
| D Direct Burial A Anchor Base | Pole Dimension, in. | S Square Straight | S Standard Duty H Heavy Duty | ## | Feet, ft. | ## Standard 00 | S Smooth | 1 Cap 2 2 3/8" Tenon 3 3" Tenon C Custom Tenon (Contact Alliance) | A Black F Bronze G Gray C Custom available | Specific Drill Pattern 4-digit unique identifier (Contact Alliance) |

Example: A4SS20F00S2G0001
Anchor Base, 4"x4", Square, Standard Duty, 20', Smooth Finish, with Cap in Gray.

Pole Specifications

Pole Shaft

Composite poles are designed and pultruded using continuous glass fiber reinforcement within a thermoset resin matrix and include a durable and long-lasting thermally bonded UV coating. All square poles are manufactured in a state-of-the-art ISO9001 certified manufacturing facility ensuring a durable, long-lasting, and resilient product in all climates.

Finish³

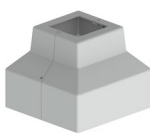
Poles are available in a Smooth finish. All square poles include 3-layers of UV protection, including a thermally bonded outer coating. Colors include black, bronze, and gray.

Base Covers³

Square and Tapered Base Covers are available, color matched to the pole for the ultimate streamlined look.



Standard Base Cover
BC-SS-40-#



Tiered Base Cover
BC-ST-40-#

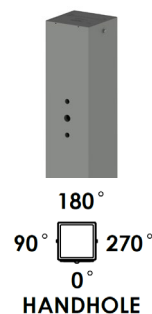
Hand Hole and Cover

Hand hole cover is 2.5"x5", UV resistant polymer, color matched to the pole. Hand hole is located 18" above ground level.



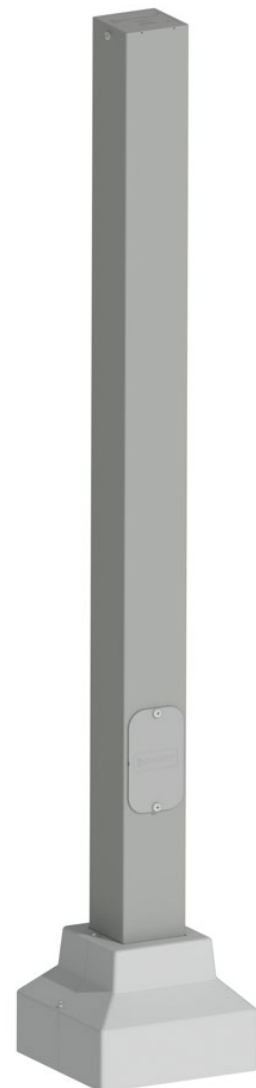
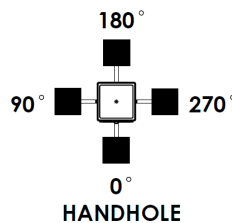
Mounting Options – Top Caps and Tenons

Plastic top cap is shipped, assembled to the pole. For top mount luminaires, Aluminum 2-3/8" and 3" diameter tenons coming soon.



Drilling⁴

All poles are factory drilled to specifications outlined in the manufacturing drawing.



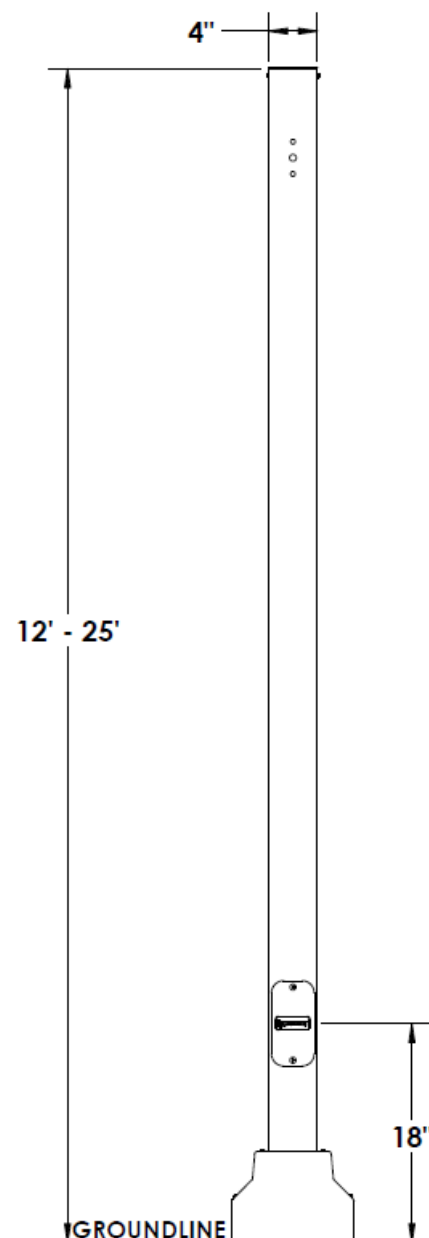
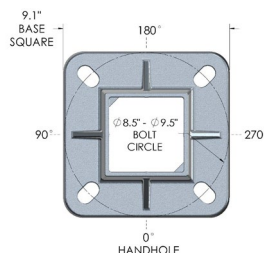
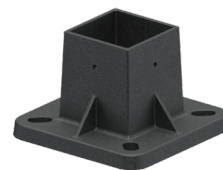
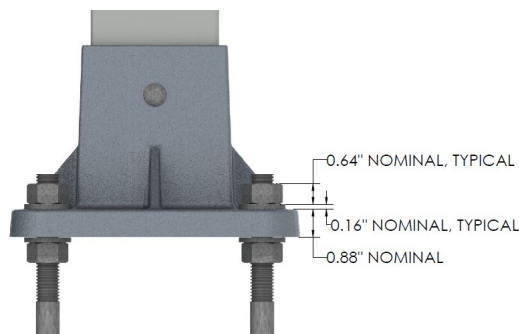
Pole Accessories³

| Catalog Number | Description |
|----------------|---|
| BC-SS-4-0-5 | Square Base Cover, Black |
| BC-SS-4-0-3 | Square Base Cover, Bronze |
| BC-SS-4-0-2 | Square Base Cover, Gray |
| BC-ST-4-0-5 | Tapered Base Cover, Black |
| BC-ST-4-0-3 | Tapered Base Cover, Bronze |
| BC-ST-4-0-2 | Tapered Base Cover, Gray |
| HDWR-AP-AB08 | $\frac{3}{4}$ " x 18" x 3", F1554 grade 55 L-shape anchor bolts, 3.5" thread hot dip galvanized with (2) heavy hex nuts & (2) USS flat washers, kit of 4 bolts w/washers/nuts |
| HDWR-AP-AB09 | $\frac{3}{4}$ " x 24" x 3", F1554 grade 55 L-shape anchor bolts, 4" thread hot dip galvanized with (2) heavy hex nuts & (2) USS flat washers, kit of 4 bolts w/washers/nuts |
| HDWR-AP-AB10 | $\frac{3}{4}$ " x 30" x 4", F1554 grade 55 L-shape anchor bolts, 4" thread hot dip galvanized with (2) heavy hex nuts & (2) USS flat washers, kit of 4 bolts w/washers/nuts |
| HDWR-AP-AB11 | $\frac{3}{4}$ " x 36" x 4", F1554 grade 55 L-shape anchor bolts, 4" thread hot dip galvanized with (2) heavy hex nuts & (2) USS flat washers, kit of 4 bolts w/washers/nuts |

Anchor Base References⁵

Anchor Base

Bases are made from corrosion resistant aluminum material providing a light weight yet strong anchor base solution. Standard 8.5"-9.5" bolt circle range. Anchorage kits available. Direct burial poles also available.



NOTES

¹Design criteria per AASHTO LTS-6-2013, with a minimum safety factor of 1.5 per ANSI C136.20-2012, 3 second gust wind speeds per ASCE 7-16, and velocity conversions per IBC 1609.3.1, 2018. Lighting installations for side and top mounting of luminaires with effective projected area (EPA) not exceeding maximum allowable loading of the specified pole in its installed geographic location. EPA ratings available up to 180 mph or for EPA ratings calculated per AASHTO LRFD or other, alternate methods, contact sales@alliancecompositesinc.com for more information.

²Always consult local authorities to determine maximum wind velocities, gusting and unique wind conditions for each specific application.

Allowable pole EPA for jobsite wind conditions must be equal to or greater than the total EPA for fixtures, arms, and accessories attached to the pole. Responsibility lies with the specifier for correct pole selection. Installation of poles without luminaires or attachment of any unauthorized accessories is discouraged and shall void the manufacturer's warranty.

Wind speeds and listed EPAs are for ground-level mounted installations only. Poles mounted on structures (bridges, buildings or other) must consider vibration and coefficient of height factors beyond this general guide. Consult all relevant local codes and federal standards. Extreme wind events like Hurricanes or Tornadoes may expose poles to flying debris, wind shear or other detrimental effects not included in wind velocity ratings.

³Longer lead times may apply, contact factory. # designates color, 2 = Gray, 3 = Bronze, 5 = Black. Custom colors available on request. Contact Alliance for information.

⁴Alliance™ is not responsible for luminaire to pole compatibility. Drill specifications, orientation and locations are provided by the customer and approved, prior to PO acceptance.

⁵Contractor is responsible for bolt selection depending on their individual criteria for the foundation of the anchor base per local code. Installation of Alliance poles on existing structures are the sole responsibility of the installer.

Contact Alliance engineers at alliance@geotek.com for pole design recommendations.

All specifications are subject to change without notice. Please visit alliancecompositesinc.com for latest information. Consult GEOTEK with specific inquiries.

All rights reserved. No part of this document may be reproduced in any form without the prior written permission of GEOTEK.

Copyright © 2023, GEOTEK.

GEOTEK
1421 Second Avenue, NW
Stewartville, MN 55976

www.geotek.com
507-533-6076